

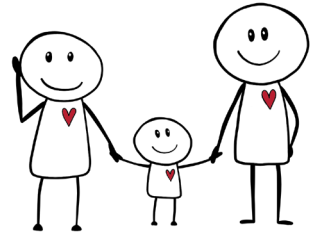
My child is developing differently

First 5 steps on how not to lose your head and get support



STEP 1: Observation – Trust your intuition

- **Write it down:** If you feel your child is not developing typically (delayed walking, weak eye contact, muscle weakness, lack of speech), write down your specific observations. A pediatrician has only 15 minutes for an exam, but you spend 24 hours a day with your child. Do not wait; note down what worries you. Your feeling is often more important than the development charts in the doctor's office.
- **Take videos:** Use your phone to record the moments that concern you (movements, reactions, behavior). This is the best evidence and material for medical specialists.



STEP 2: The journey to a diagnosis – Do not wait

- **Request referrals:** Do not let yourself be brushed off with the phrase „they will grow out of it.“ Insist on getting a referral to a pediatric neurologist, a geneticist, or a clinical speech therapist.
- **Center of Support (Centrum provázení):** Find out if there are support workers operating in your hospital who can guide you through the first days after receiving a diagnosis.

STEP 3: Financial cushion (State support)

- **Care Allowance (Příspěvek na péči):** Do not wait for a final medical diagnosis. You can submit an application at the Labor Office (Úřad práce) as soon as your child requires increased care in areas like mobility, self-care, or communication.
- **Disability Card (Průkaz ZTP/P):** Check if you are eligible for transport and parking benefits, which will make traveling to doctors much easier.

STEP 4: Finding funds for therapies (Foundations)

- **Research foundations:** Make a list of charitable foundations (e.g., Committee of Good Will, Charter 77 Foundation, Patron dětí) that contribute to expensive neurorehabilitations, speech therapies, or medical equipment not covered by health insurance. Start preparing your applications early.

STEP 5: Professional help right at your home

- **You don't have to be alone in this:** Raná péče Kolping (Kolping Early Intervention Service) is here to help you find stable ground. We will guide you through the entire process, help with paperwork, and come to support you and your child directly at your home. All our services are 100% free of charge.

You can take the first non-binding step today.

Call or write. We'll talk about what's bothering you and you decide whether to meet.



+420 777 558 400



rana.pece@kolpingsmecno.cz



kolpingsmecno.cz/rana-pece/

